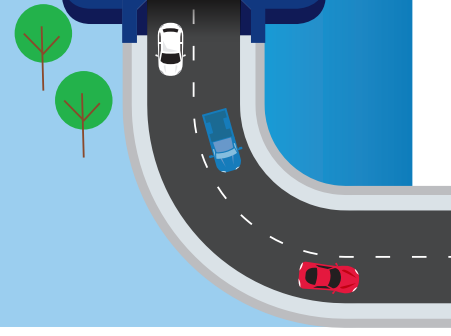




# Western Harbour Tunnel and Warringah Freeway Upgrade



## Open space and community

*Artist's impression of Woodleys boatshed, Berrys Bay. Indicative layout only.*



## Urban design and visual amenity

We understand the character and visual amenity of your local area is important to you. We carried out an urban design, visual and landscape character assessment, which considered the potential for impact to the overall landscape, and visual amenity as a result of our project.

Our project has been designed to make the most of existing transport corridors and built-up urban areas and is largely built underground to minimise impacts on the surface. This is so our project can blend into the surrounding environment and reduce the character and visual impact in local areas, where possible.

Due to the large scale of our project, there will be some permanent impact to the local landscape and visual amenity.

The most noticeable visual changes will relate to:

- landscape changes to open space in Cammeray Golf Course. While we will need to remove some trees and plantings to allow for the construction of new permanent facilities like the motorway operations facilities, we are committed to minimising the number of trees required to be removed and keeping a green buffer between houses and our site.
- ventilation facility located within the Warringah Freeway and other motorway operations buildings next to the freeway.

## Open space

We are committed to returning as much of the open space we use through construction to the community as we can. We will:

- engage with the community this year to deliver new public open space at Berrys Bay once the project is complete
- work with the original architect for Yurulbin Park to bring his original vision to life
- work with North Sydney Council on the future layout of the Ridge Street North construction site after we have finished our work
- continue to work with Cammeray Golf Club on ways to minimise our impact to users of the golf course.

## Future investments in shared user projects

The NSW Government recognises that more people than ever before are walking or cycling to work or for leisure and fitness. This is why it recently committed to investing a further \$197 million into walking and cycling infrastructure over the next four years. This will bring the NSW Government's total investment to over \$600 million, the largest commitment in the State's history.

The NSW Government is committed to continuing to encourage people to walk and cycle as part of their everyday commute. Not only does it help relieve pressure on roads and public transport systems, but walking and cycling are healthy, active ways to travel. Continuing to invest in new walking and cycling infrastructure keeps people safe while encouraging more people to take up these modes of travel.

For more information please refer to Chapter 22: Urban design and visual amenity in the EIS

In addition to public open space, and as part of the NSW Government's commitment, we will also be providing new and improved cycleways and shared user paths. We will be:

- building a dedicated cycleway between Miller and Falcon Streets at Cammeray
- upgrading the Ernest Street Bridge across the Warringah Freeway to link Cammeray Golf Course with Anzac Park; including a new shared user path
- rebuilding the Ridge Street Bridge at North Sydney to provide more room for cyclists and pedestrians
- upgrading the High Street Bridge at North Sydney to provide more room for cyclists and pedestrians.

We will be further developing the urban design as part of the detailed design with the construction contractor. We will seek your important input to ensure our project integrates with the unique character of your surrounding land and creates spaces which match the aspirations of local communities.

We will be inviting you to take part in a range of opportunities to provide input and feedback on the urban design and landscaping as the project progresses.

Artist's impression of new shared user path on Ernest Street Bridge




## Contact the Western Harbour Tunnel and Beaches Link team

 [nswroads.work/whtbl](https://nswroads.work/whtbl)

 [whtbl@transport.nsw.gov.au](mailto:whtbl@transport.nsw.gov.au)

 1800 931 189

 Customer feedback  
Transport for NSW, Locked Bag 928  
North Sydney NSW 2059

### Visit our interactive web portal

Read the EIS, find out more or ask our team a question.

 [nswroads.work/whtportal](https://nswroads.work/whtportal)



If you need help understanding this information, please contact the Translating and Interpreting Service on 131 450 and ask them to call us on 1800 931 189.

**Privacy** Transport for NSW is subject to the Privacy and Personal Information Protection Act 1998 ("PPIP Act") which requires that we comply with the Information Privacy Principles set out in the PPIP Act. All information in correspondence is collected for the sole purpose of assisting the assessment of this proposal. The information received, including names and addresses of respondents, may be published in subsequent documents unless a clear indication is given in the correspondence that all or part of that information is not to be published. Otherwise Transport for NSW will only disclose your personal information, without your consent, if authorised by the law. Your personal information will be held by Transport for NSW. You have the right to access and correct the information if you believe that it is incorrect.